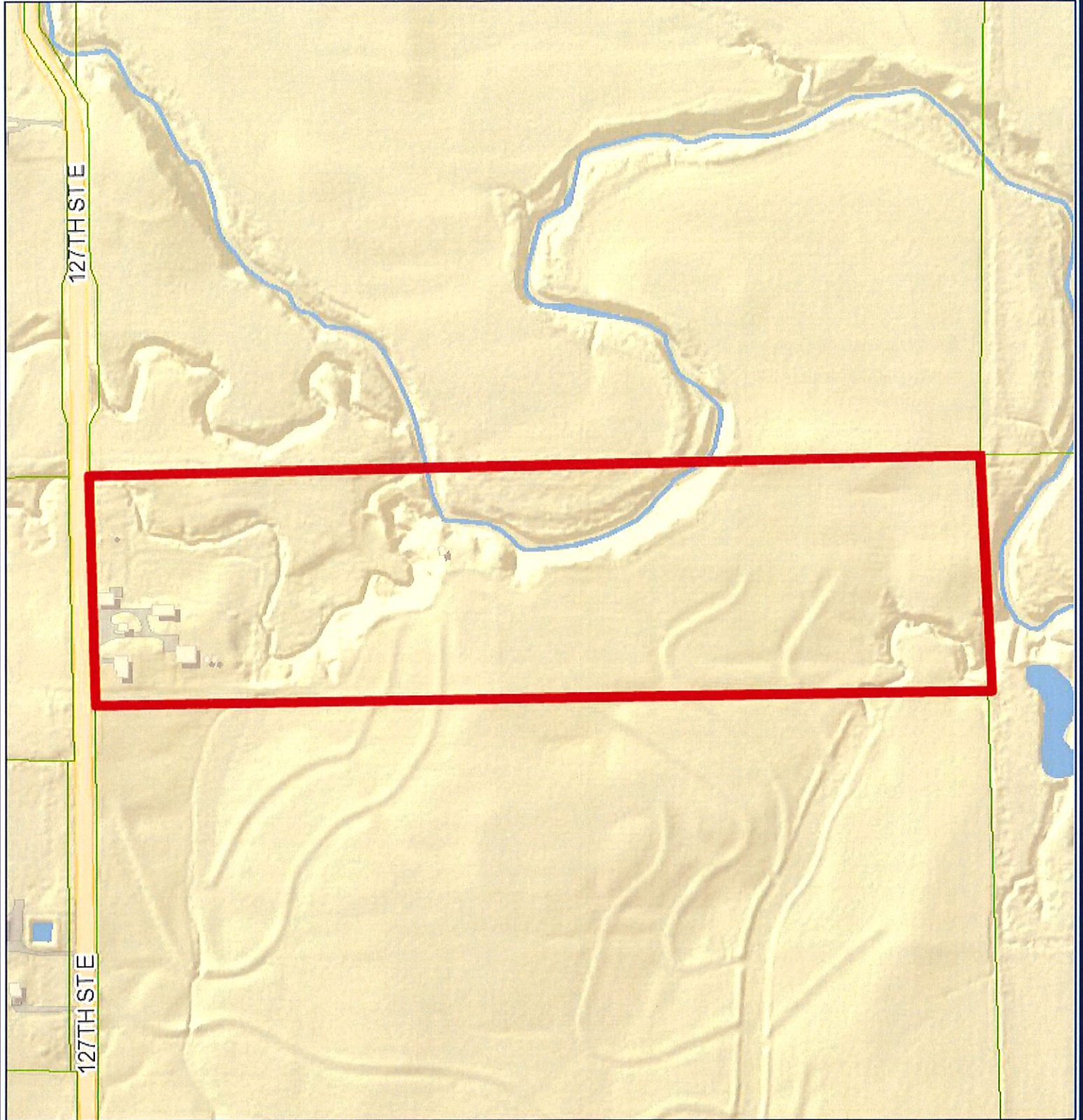


11500 N 127th Hill



Geographic Information Services

Sedgwick County...
working for you

Geographic Information Services
Division of Information & Operations
www.sedgwickcounty.org/gis
525 N. Main, Suite 212, Wichita, KS 67203
Tel: 316.660.9290 Fax: 316.262.1174

Tue Oct 8 09:31:06 GMT-0500 2019

DISCLAIMER It is understood that, while Sedgwick County Geographic Information Services (SCGIS), City of Wichita GIS, (for purposes of the road centerline file), participating agencies, and information suppliers, have no indication or reason to believe that there are inaccuracies in information provided, SCGIS, its suppliers make no representations of any kind, including, but not limited to, warranties of merchantability or fitness for a particular use, nor are any such warranties to be implied with respect to the information, data or service furnished herein. In no event shall the Data Providers become liable to users of these data, or any other party, for any loss or damages, consequential or otherwise, including but not limited to time, money, or goodwill, arising from the use, operation or modification of the data. In using these data, users further agrees to indemnify, defend, and hold harmless the Data Providers for any and all liability of any nature arising out of or resulting from the lack of accuracy or correctness of the data, or the use of the data. No person shall sell, give or receive for the purpose of selling or offering for sale, any portion of the information provided herein.