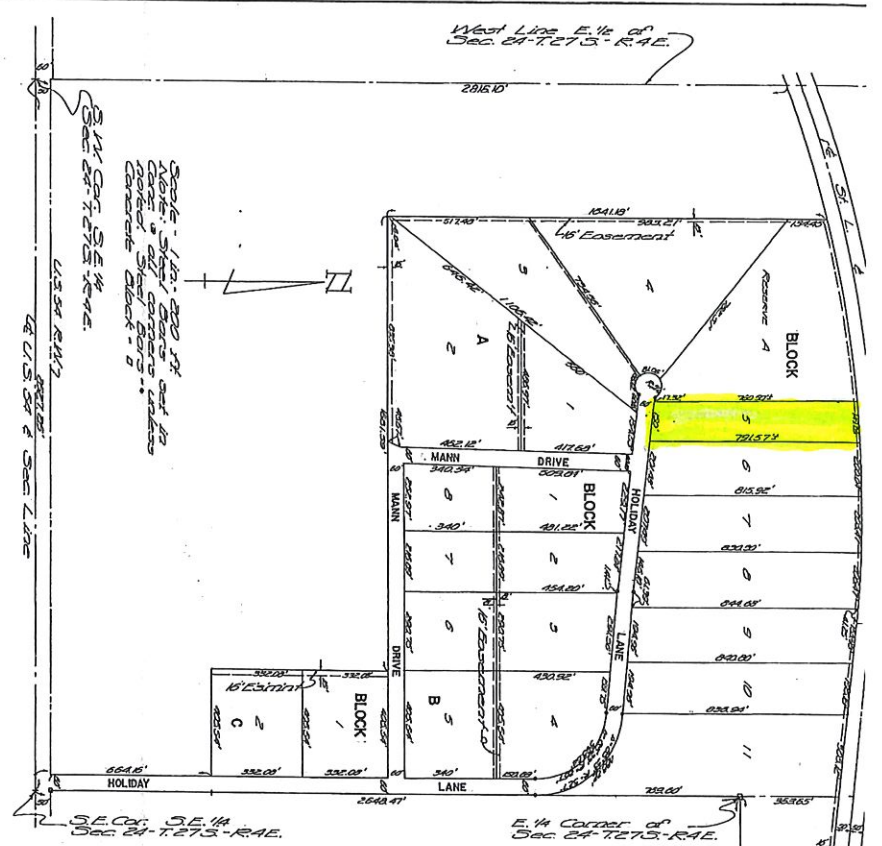


A REPLAT IN  
**HOLIDAY LAKE ADDITION**  
 IN THE NW 1/4 OF SECTION 19 - T27S - R5E  
 AND  
 IN THE E 1/2 OF SECTION 24 - T27S - R4E,  
 A SUBDIVISION OF BUTLER COUNTY, KANSAS.



Section 19, Township 27 South, Range 5 East, 5th Principal Meridian, Butler County, Kansas.

Section 24, Township 27 South, Range 4 East, 5th Principal Meridian, Butler County, Kansas.

Section 19, Township 27 South, Range 5 East, 5th Principal Meridian, Butler County, Kansas.

Section 24, Township 27 South, Range 4 East, 5th Principal Meridian, Butler County, Kansas.



State of Kansas, County of Butler, ss:  
 I, Clerk of said County, do hereby certify that the foregoing plat is a true and correct copy of the original as recorded in my office on this 11th day of October, 1928.

THE BOARD OF SUPERVISORS  
 BUTLER COUNTY, KANSAS  
 J. H. ...  
 ...



Section 19, Township 27 South, Range 5 East, 5th Principal Meridian, Butler County, Kansas.

Handwritten signatures and initials.