

Search

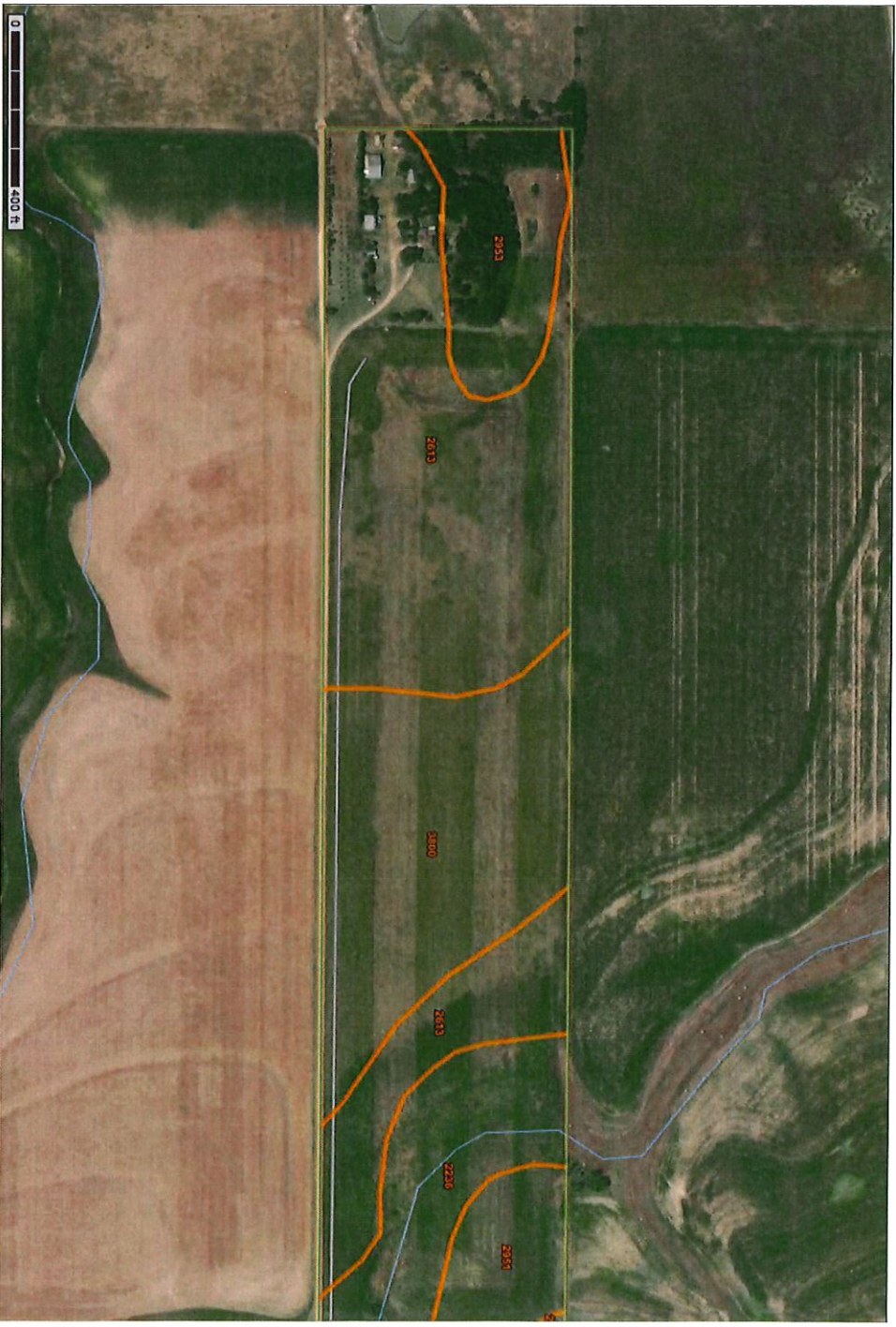
Map Unit Legend

Barton County, Kansas (KS009)

Map Unit Symbol	Map Unit Name	Acres in AOI	Percent of AOI
2236	Roxbury silt loam, occasionally flooded	5.7	12.3%
2613	Harney silt loam, 1 to 3 percent slopes	21.4	46.0%
2951	Wakeen silt loam, 1 to 3 percent slopes	2.9	6.2%
2953	Wakeen silt loam, 3 to 7 percent slopes	4.7	10.0%
3800	Crete silt loam, 0 to 1 percent slopes, loess plains and breaks	11.9	25.6%
<b>Totals for Area of Interest</b>		<b>46.6</b>	<b>100.0%</b>

Soil Map

Scale (not to scale)



**Warning: Soil Map may not be valid at this scale.**

You have zoomed in beyond the scale at which the soil map for this area is intended to be used. Mapping of soils is done at a particular scale. The soil survey comprise your AOI were mapped at 1:24,000. The design of map units and the level of detail shown in the resulting soil map are dependent on that map scale. Enlargement of maps beyond the scale of mapping can cause misunderstanding of the detail of mapping and accuracy of soil line placement. The maps do not show small areas of contrasting soils that could have been shown at a more detailed scale.