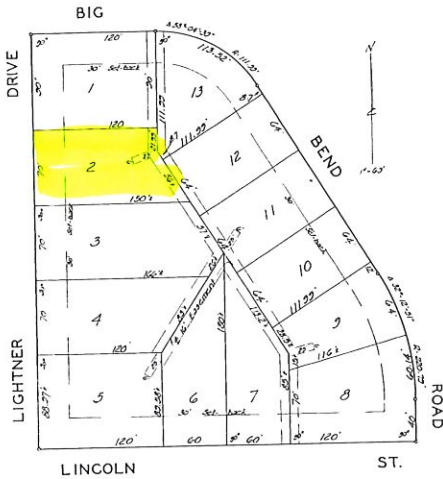


RECORD

# REPLAT OF RESERVE 'A' PRAIRIE PARK

AN ADDITION TO WICHITA, KANSAS.



State of Kansas } s.s. Be it remembered that on  
Sedgwick County } this 21st day of November 1950, before me a  
Notary Public in and for said county and state  
came Town and Country Estates Inc., a corporation  
by its Vice-President U.A. Denker and its  
Secretary S.W. Vaughn, to me known to be  
the same persons who executed the foregoing  
instrument of writing and duly acknowledged  
the execution of the same as their voluntary act  
and deed and as the act and deed of said  
corporation. In testimony whereof I have  
hereunto set my hand and affixed my notarial  
seal the day and year above written.

Gene G. Grier Notary Public  
My Commission Expires June 1, 1954

This plat of "REPLAT OF RESERVE 'A' PRAIRIE PARK" an addition to Wichita, Kansas, has been submitted to and considered by the City Planning Commission of Wichita, Kansas and is hereby transmitted to the Board of City Commissioners with the recommendation that such plat be approved as proposed. Dated this 21st day of November 1950. The City Planning Commission of Wichita, Kansas

John W. Darr Chairman  
August M. Smith Secretary

Approved by the Board of  
City Commissioners this 28th day of  
November 1950.

Carroll Duke Mayor  
C.H. Stumb Assistant City Clerk

Approved by the Board of  
County Commissioners this 28th day of  
November 1950.

John Schmitt County Clerk

Entered on transfer record  
this 1st day of December 1950.  
John Schmitt County Clerk

State of Kansas } s.s. This is to certify that  
Sedgwick County } this instrument was filed for record in the  
office of the Register of Deeds this 1st day  
of Dec. 1950 at 9:30 o'clock A.M. and is duly  
recorded.

C.S. Anderson Register of Deeds  
J.W. Clark Reg.

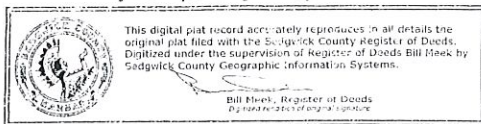
State of Kansas } s.s. I, Clyde M. Baughman, County  
Sedgwick County } Surveyor in and for said county and state do hereby  
certify that I have surveyed and platted  
"REPLAT OF RESERVE 'A', PRAIRIE PARK" an addition  
to Wichita, Kansas, and the accompanying plat  
is a true and correct exhibit of the property  
surveyed described as follows: Reserve 'A',  
Prairie Park, an Addition to Wichita, Kansas.

Clyde M. Baughman Surveyor

Know all men by these presents  
that we Town and Country Estates Inc., a corporation by its Vice-President U.A. Denker, and Ass't. Secretary S.W. Vaughn, have caused the land described in the surveyors certificate to be platted into lots to be known as "REPLAT OF RESERVE 'A' PRAIRIE PARK" an Addition to Wichita, Kansas. Easements are hereby granted as indicated for the construction and maintenance of all public utilities.

Town and Country Estates, Inc., a corporation  
By U.A. Denker Vice-President  
S.W. Vaughn Ass't. Secretary

RI 3 13



This digital plat record accurately reproduces in all details the original plat filed with the Sedgwick County Register of Deeds. Digitized under the supervision of Register of Deeds Bill Meek by Sedgwick County Geographic Information Systems.

Bill Meek, Register of Deeds  
Digitized under supervision of Bill Meek