

# PLAT OF LEGAL SURVEY NO. 758 IN BOWYER'S ADDITION

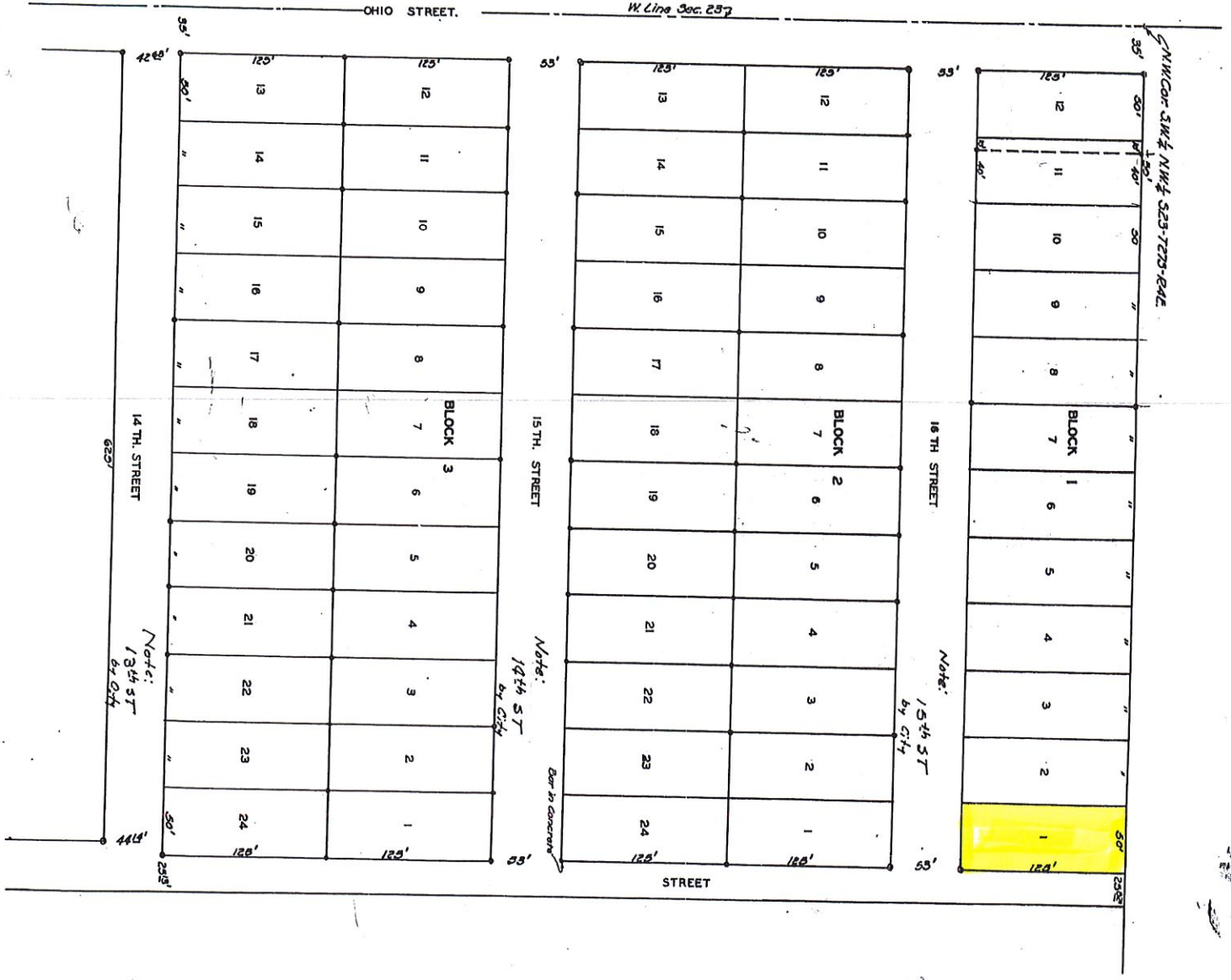
**SURVEYOR'S CERTIFICATE**  
 L.W. Newcomer, County Engineer, do hereby certify  
 this is a true and correct plat of legal survey  
 as described as follows - Beginning at the NW  
 1/4, NW 1/4, Sec. 23-7273-242, Twp. 2, S., R. 13, E.,  
 17255 ft. to point of beginning.

*L.W. Newcomer*  
 County Engineer

OF KANSAS } 69  
 OF BURZLER } 69  
 instrument was filed for record on the 12 day  
 of Jan. 1908 of Vol. 21, page 151, and duly filed  
 book 2 of page 151.

*William McNeil Shires*  
 Register of Deeds

LEGEND  
 0-4" Concrete Block  
 1/4" Steel Bar  
 Scale - 1" = 50'



Note:  
 13th ST  
 by CH

Note:  
 14th ST  
 by CH

Note:  
 15th ST  
 by CH

Bar to Concrete