

Authentisign ID: 110D076F-934D-ED11-ADE6-14CB65852CA7

7474 S Broadway

Sedgwick County, Kansas



Authentisign
Jacob Swink
10/16/22

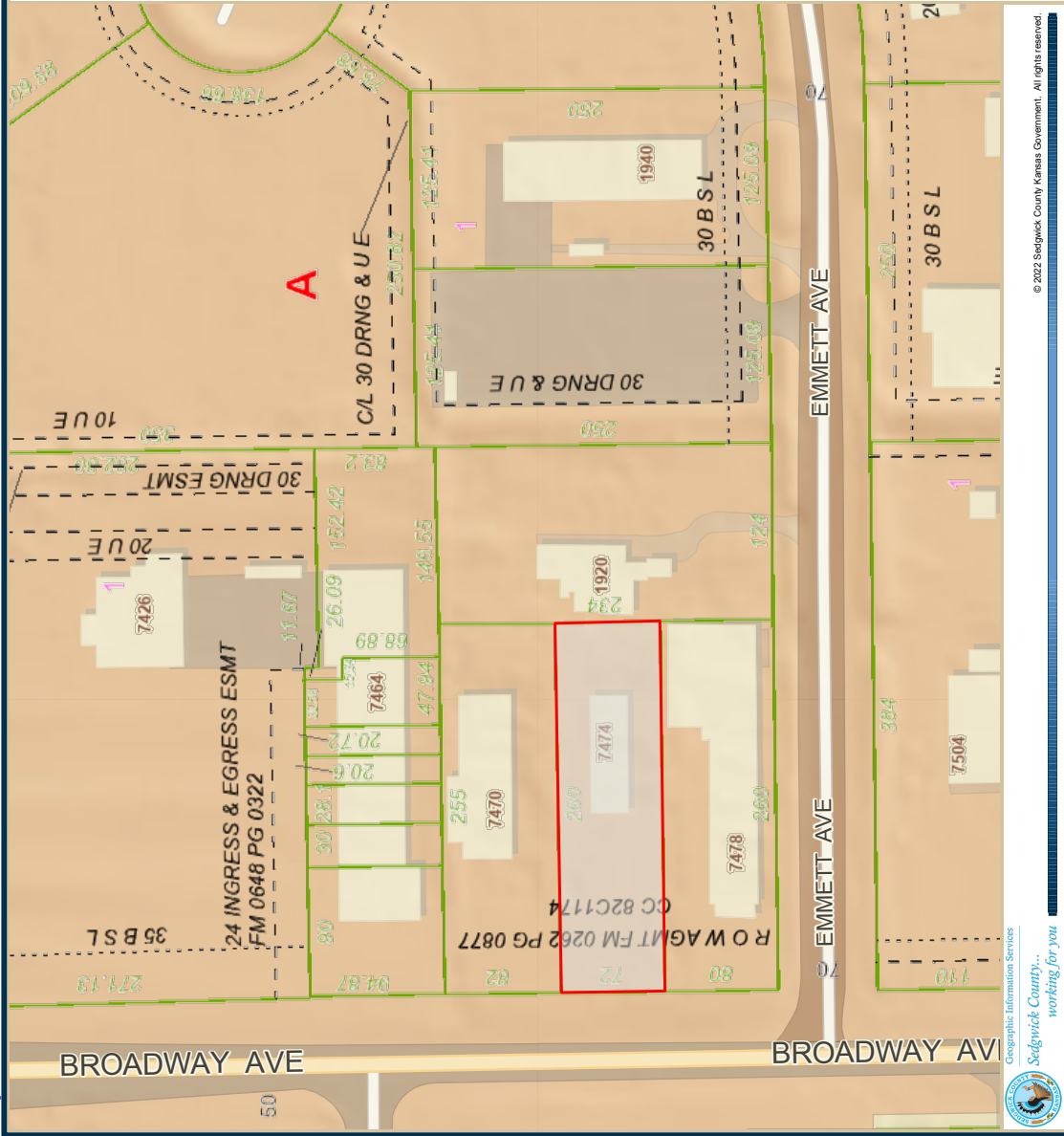
Authentisign
Lisa Jeter
10/16/22



Date: 9/8/2022

It is understood that the Sedgwick County GIS Division of Information and Operations, has no indication or reason to believe that the information incorporated in the base map.

The GIS personnel make no warranty or representation, either expressed or implied, with respect to the information or the data displayed.



© 2022 Sedgwick County Kansas Government. All rights reserved.

