

Legend

Extraterritorial Sub Zones

- Derby
- Haysville
- Mulvane
- Valley Center

Historic District

- Local Districts
- National Districts

Historic Site

- Locally Registered
- State/National
- State

Non Conformance Site



Special Use Case



Wichita Old Town District

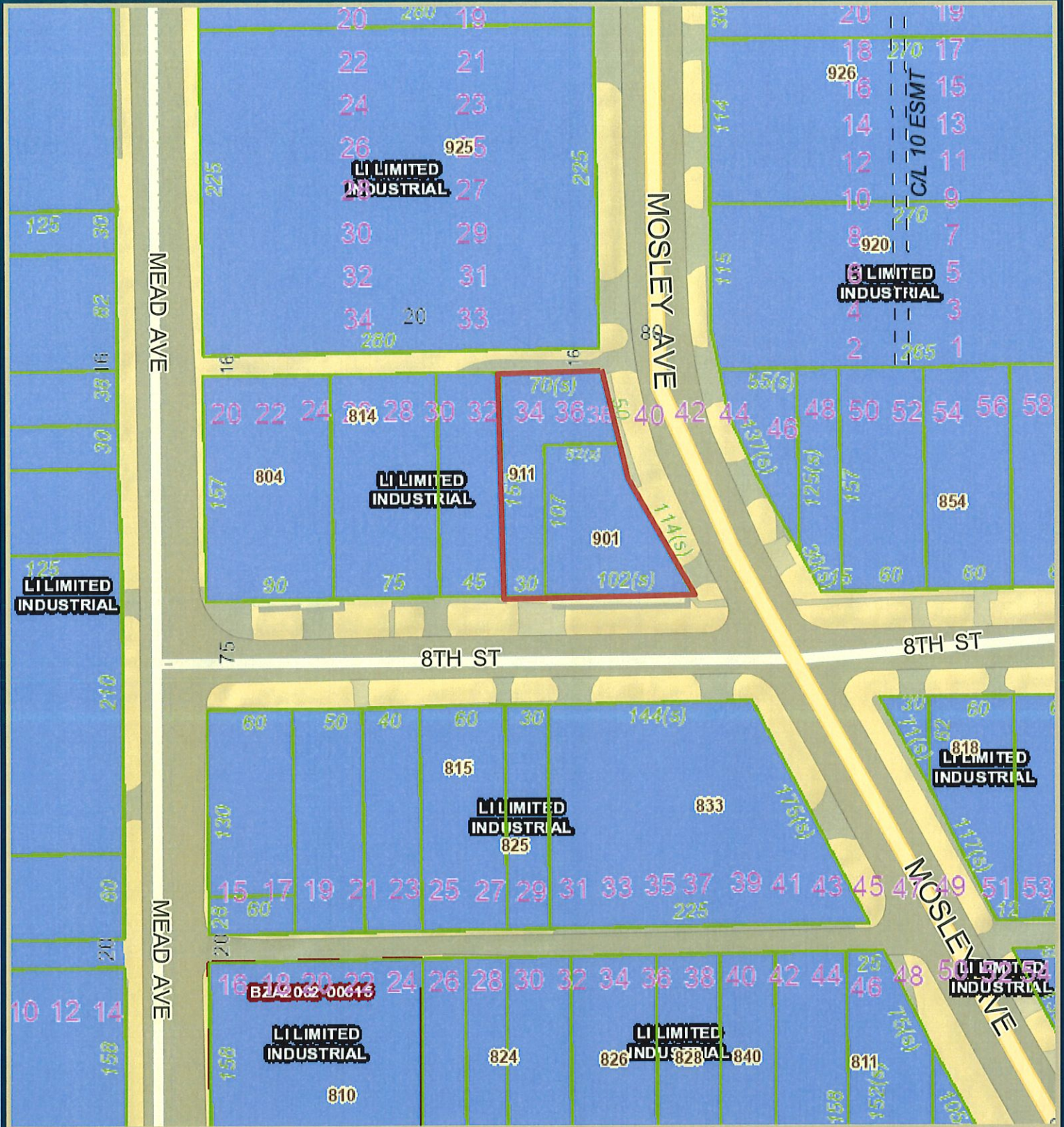


Zoning

- Rural Residential (RR)
- Single Family: 20,000 (SF-20)
- Single Family: 10,000 (SF-10)
- Single Family: 5,000 (SF-5)
- Two-Family (TF-3)
- Multi-Family: 18 d.u./ac (MF-18)
- Multi-Family: 29 d.u./ac (MF-29)
- Multi-Family: 75 d.u./ac (B)
- Manufactured Housing (MH)
- Neighborhood Office (NO)
- General Office (GO)
- Neighborhood Retail (NR)
- Limited Commercial (LC)
- General Commercial (GC)
- Central Business District (CBD)
- Office Warehouse (OW)
- Industrial Park (IP)
- Limited Industrial (LI)
- Industrial Park - Airport (IP-A)
- General Industrial (GI)

60ft

1,651,899.025 1,690,280.220 Feet



It is understood that the Sedgewick County GIS, Division of Information and Operations, has no indication or reason to believe that there are inaccuracies in information incorporated in the base map.

The GIS personnel make no warranty or representation, either expressed or implied, with respect to the information or the data displayed.

© 2023 Sedgewick County Kansas Government.  
 All rights reserved.

**My Map**

---

**Sedgewick County, Kansas**

