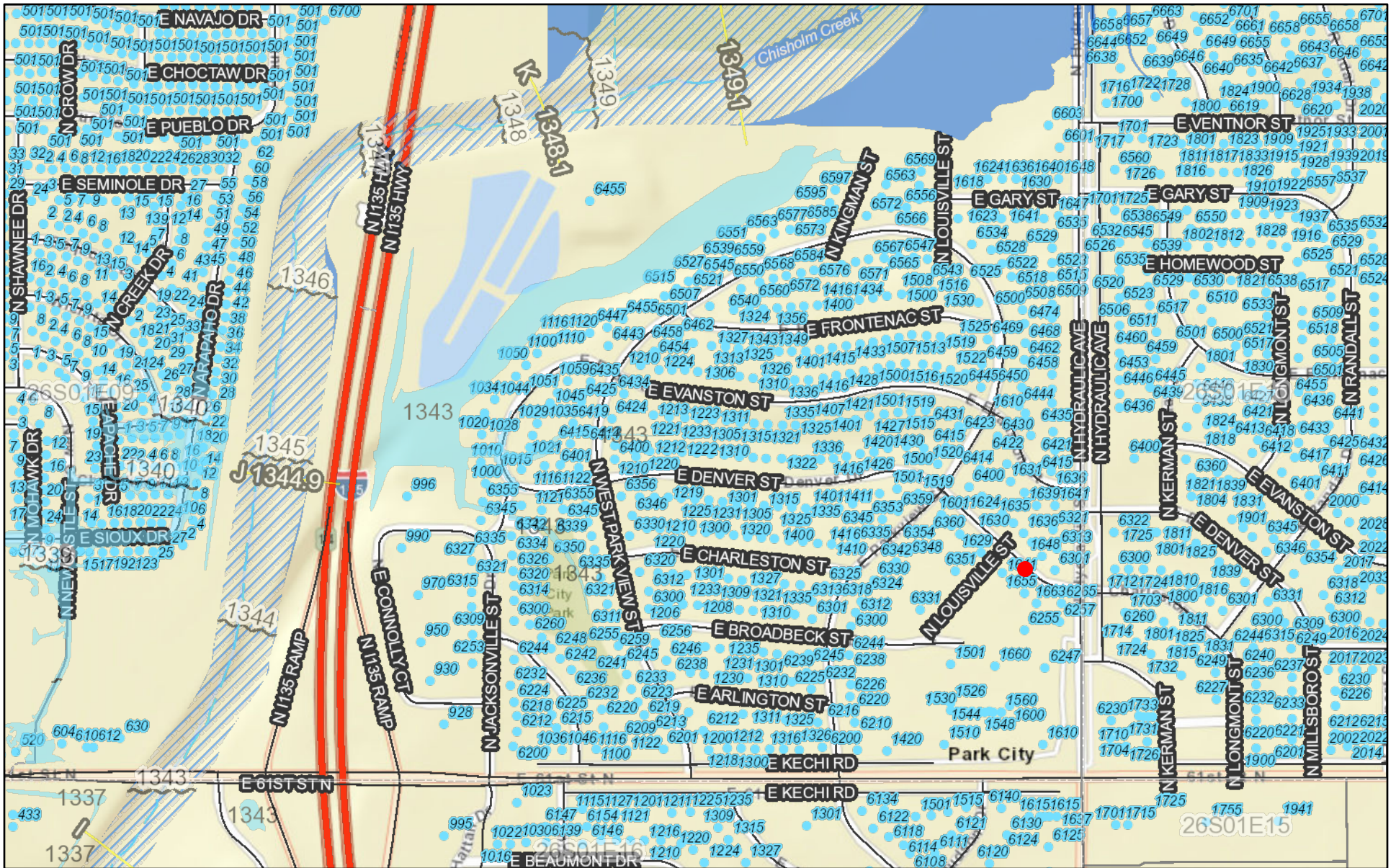


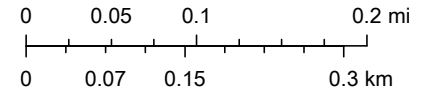
# Viewer Map



May 9, 2023

- User drawn points
- AH
- A
- Lettered Cross Sections
- Special Flood Hazard Area
- AE, FLOODWAY
- LOMR Areas
- Base Flood Elevations
- AO
- AE
- Unlettered, Mapped Cross Sections

1:9,028



All Kansas PSAPs, NG911 Coordinating Council, DASC, City of Wichita, Sedgwick County, Esri, HERE, Garmin, INCREMENT P, NGA, USGS

Base Flood Approximate Elevations developed by Kansas Department of  
Copyright 2014